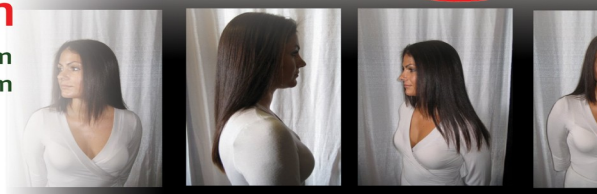


LA-BRASILIANA

Keratin Treatment with Collagen

Hair Color Research Group
 133-20 Whitestone Expressway
 Flushing, NY, 11354
 Tel: (718) 445-6026 (800) 519-2309
 Fax: (718) 445-6216

www.la-brasiliana.com
 info@la-brasiliana.com



MATERIAL SAFETY DATA SHEET

IDENTITY LA-BRASILIANA LUCIA Light Spray Shine	
--	--

SECTION I

Manufacturer's Name Hair Color Research Group	Emergency Telephone Number CHEMTREC: (800)424-9300
Address 133-20 Whitestone Expressway Flushing, NY 11354	Telephone Number for Information 718-445-6026
	Date Prepared 08/2011
	Signature of Preparer(Optional)

SECTION II-HAZARDOUS INGREDIENTS/IDENTITY INFORMATION

Hazardous Components	OSHA PEL	ACGIH TLV	Other Limits Recommended	%(optional)
Cyclopentasiloxane (CAS541-02-6)			Twa 10 ppm	10
Isododecane (CAS13475-82-6)			< 10mg hg	
Phenyl Trimethicone (cas2116-84-9)				

SECTION III- Physical/Chemical Characteristics

Boiling Point	98 °C	Specific Gravity (H2O=1)	0.98
Vapor Pressure	N/D	Melting Point	N/A
Vapor Density	N/A	Evaporation Rate (Butyl Acetate = 1)	N/D

Solubility in Water : Soluble			
Appearance and Odor : Clear Liquid with Orange Scent.			
SECTION IV-Fire and Explosion Hazard Data			
Flash Point (Method Used) Product flash point 134 °F	Flammable limits N/D	LEL N/D	UEL N/D
Extinguishing Media Water, CO2, Dry Chemical Foam			
Special Fire Fighting Procedures Use Self-Contained breathing apparatus. Water maybe used on containers exposed to intense heat to prevent vapor pressure buildup.			
Unusual Fire and Explosion Hazards None			
Section V - Reactivity Data			
Stability	Unstable		Conditions To Avoid
	Stable	X	None Known
Incompatibility (Materials to Avoid) N/A			
Hazardous Decomposition or Byproducts			
Hazardous Polymerization	May Occur		Conditions to Avoid
	Will Not Occur	X	N/A
Section VI- Health Hazard Data			
Route(s) of Entry	Inhalation?	Yes	Skin? No
			Ingestion? No
Health Hazards (Acute and Chronic)			
Carcinogenicity:	NTP?	IARC Monographs	OSHA Regulated?
No	No	N/A	No
Signs and Symptoms of Exposure			
Acute: Inhalation can irritate the nose, throat and lungs. Skin contact might cause irritation. Vapors might cause irritation to the eyes with redness, pain and blurred vision.			
Chronic:			
Medical Conditions			
Generally Aggravated by Exposure			
May aggravate existing skin, eye, respiratory, liver and kidney conditions.			

Emergency and first Aid Procedures

Inhalation: If inhaled remove to fresh air, If not breathing give artificial respiration, preferable mouth-to-mouth. If breathing is difficult give oxygen. Get medical attention.

Skin Contact: Immediate wash thoroughly with soap and water, remove contaminated clothing and footwear. Wash clothing before reusing. Get medical attention if irritation should develop.

Eye contact: Remove contact lenses. immediately flush eyes with plenty of water for at least 15 minutes, holding eyelids apart to ensure flushing of the entire surface. Washing within one minute is essential to achieve maximum effectiveness. Seek immediate medical attention.

Ingestion: If swallowed , call a physician immediately. Only induce vomiting at the instruction of the physician. Never give anything by mouth to an unconscious person.

Notes To Physician: Treat symptomatically.

Section VII- Precautions for Safe Handling and Use**Steps to be Taken in Case Material is Released or Spilled****Precautions to be Taken in Handling and Storing**

Avoid contact with eyes, skin and clothing. Avoid breathing vapors.

Other Precautions

Section VIII-Control Measures**Respiratory Protection (Specify Type)**

Ventilation	Local Exhaust N/A	Special N/A
	Mechanical N/A	Other N/A

Protective Gloves N/A	Eye Protection N/A
---------------------------------	------------------------------

Other Protective equipment N/A

Work/Hygiene Practices Ventilate area. Isolate spill and stop leak where safe. Wear appropriate personal equipment as specified in section VIII. Contain and collect equipment in an appropriate container or absorb with an inert material. Do not flush to sewers or surface waterways.